

Best Practices and Key Takeaways




Shaping Tomorrow



Keep the material inside in a properly ventilated place to keep it dry.



Store in an environment with controlled humidity and temperature.



Avoid condensation on metal surfaces and rapid temperature changes.




Store material on a smooth and clean surface.




Material should be treated with care and never dragged or pushed.




Do not place the coil directly on ground without rubber and felt mats.



Avoid double stacking of coils.



Use the material as soon as possible and maintain a FIFO (First In, First Out) stock rotation system.



Remove the protective film on the panels at the factory immediately after mounting, but no later than 2 weeks.



Contact Us:

Head Office

101 Beaumont Plaza, 10 Beaumont Road, Karachi - 75530
Tel: +92 (21) 111 019 019 | Fax: +92 (21) 3568 0373

Email: info@isl.com.pk
Website: www.isl.com.pk

Storage and Handling Guidelines

Prepainted Steel Coil, Sheets and Building Panels

Ensuring Efficiency and Safety



Enhancing Aesthetics and Protecting Integrity

Prepainted steel products, coated through a meticulous coil-coating process, offer aesthetic enhancement and corrosion protection.

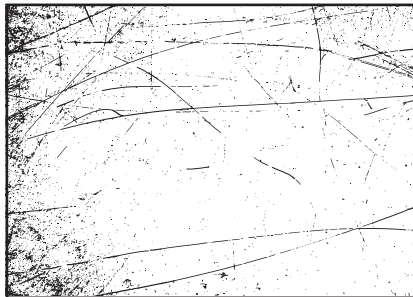
Proper storage and handling are crucial to maintaining their quality and longevity.

This document provides detailed guidelines for the storage and handling of prepainted metallic-coated steel sheets and cold-rolled counterparts.

By following these protocols, you can preserve both the aesthetic appeal and durability of the product, ensuring a long-lasting and resilient material.

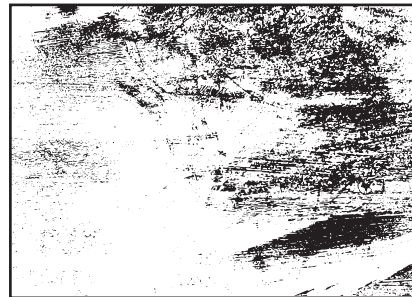
Proper storage and handling are crucial to maintain the service life and quality of prepainted galvanized sheets. Neglecting these can lead to scratches, indentations, corrosion, and other defects.

Key Considerations



Physical Damage:

Prevent physical harm such as scratches or indentations to maintain coating integrity.



Degradation:

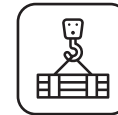
Protect against corrosion and degradation by preventing exposure to external agents and the natural aging process.

General Storage and Handling Principles



Maintain Dry Conditions:

- Ensure all materials are kept dry to prevent corrosion.
- Avoid relying on paper or plastic wrapping to keep materials dry as they do not provide sufficient protection and can trap moisture.



Avoid Handling Damage:

- Handle with care to prevent scratches and indentations.
- Provide sufficient space for crane and forklift movement.



Store on Clean, Smooth Surfaces:

- Use dedicated storage facilities with smooth supports to prevent indentations.
- Ensure storage surfaces are free of debris and unevenness.



Use Promptly:

- Use the material as soon as possible to maintain its properties.
- Follow a FIFO (First-In-First-Out) stock rotation system.



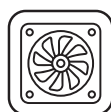
Store Inside:

- Whenever possible, store materials indoors in a suitable environment with controlled humidity and temperature to ensure optimal preservation.
- Ensure proper ventilation to prevent moisture build-up and maintain material's integrity.



Pre-painted Steel Coils

Storage and Handling Guidelines



Ventilation

- Ensure proper ventilation to prevent moisture buildup.
- Avoid relying on paper or plastic wrapping to keep coils dry.



Handling

- Avoid dragging coils.
- Use proper lifting devices like a C-hook, nylon slings, etc. to lift, move, load and unload coils.
- Use rubber pads where the sling comes in contact with the material.



Temperature Control

- In the storage area, avoid large temperature variances to prevent condensation.
- Avoid rapid temperature fluctuations.

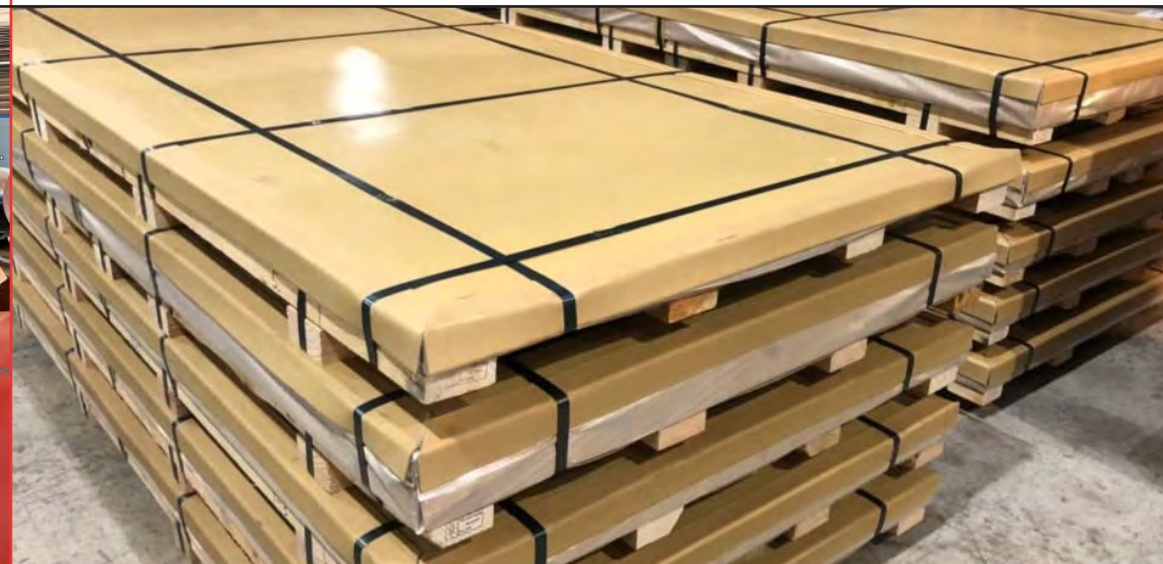


Proper Support

- Store coils on clean, smooth supports to prevent indentations.
- If coils are placed directly on the ground, use rubber or felt mats.

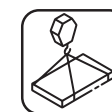
Pre-painted Steel Sheets

Storage and Handling Guidelines



Support and Stacking

- Use proper supports and limit stack heights to avoid excessive pressure and marking.
- Ensure wooden battens remain in good condition and vertical.



Handling Devices

- To prevent scratching, never drag sheets off stacks.
- Avoid dragging coils and use proper lifting devices, such as C-hooks, nylon slings, or suction and magnetic lifting devices, to lift, load, and unload coils.
- Use rubber pads where the sling comes in contact with the material.
- If manual handling is necessary, lift sheets carefully from the edge and carry them upright.
- Use stillages with appropriate contact points (wooden, rubber, or felt).



Temperature Control

- In the storage area, avoid large temperature variances to prevent condensation.
- Avoid rapid temperature fluctuations.

Building Panels

Storage and Handling Guidelines



Protect from Weather

- Store panels under cover or inside to keep them dry.
- Use a scaffold frame or waterproof tarpaulin to protect panels if indoor storage is not possible.



Temperature Control

- Store in a suitable environment with controlled humidity and temperature.
- Avoid rapid temperature changes.



Lift with Care

- Use nylon slings or spreader bars for lifting.
- Handle panels upright with adequate support.

Maintenance and Repair of PPGI

Recommendations



Regular Inspections

- Conduct bi-annual inspections to identify and address issues early, especially in aggressive environments.
- Focus on checking sealants, fasteners, and overall finishing.



Cleaning

- Remove dirt and debris to extend the lifespan of coated materials.
- Wash regularly using municipal water and mild detergents if necessary.



Avoid Harsh Cleaners

- Use only mild, non-abrasive cleaning agents to prevent damage to surfaces and materials.
- Always test cleaning products on a small, inconspicuous area before full application.



Repairing

- Limit repairs to small areas and consult with ISL for significant repairs.
- Wash and dry damaged areas if no corrosion is present.